



We are currently recruiting for a SEND Practitioner to join our inspiring team. We are looking for someone who is united in creating a modern setting that excites the children with Special Educational Needs and/or Disabilities to maximise their potential.

Here at Home-Start Greenwich, our enchanting play spaces embrace the wonders of loose parts play alongside our expansive outdoor area. Complete with Forest School, perfect for active children's exploration and learning. You will be an integral part of our Early Years team, setting the stage for curiosity and exploration, both indoors and outdoors.

You will be part of a team that takes pride in creating a nurturing environment that caters to all children's needs and acknowledges the diversity of each child's background, culture, and disabilities. At Home-Start Greenwich, people, passion, and ambition are at the heart of everything we do, if you want to inspire, motivate, and challenge children to be the best they can be, why not join our team?

About Us

Home-Start Greenwich is an independent charity affiliated to Home-Start UK. We have been delivering in the Royal Borough of Greenwich for over 30 years!

We provide support to families and their children, around health, parenting and general well-being. We help families to access specialist services. We support parents as they grow in confidence, we help them to strengthen their relationships with their children and to widen their links with the local community.

Our staff and volunteers work hard to transform the life chances for children and families, as well as helping to provide welcoming, targeted and universal services to ensure the health and wellbeing of families and development of children.

We are committed to high quality staff and volunteer led activities, to deliver an exciting range of services that help parents to build better lives for their children.

What We Do

To achieve our vision, we provide the following services:

- 1:1 Home-Visiting Service, delivered by volunteers offering weekly support to families in their own homes and into the community.
- Good quality childcare and early education through the running of nursery provision.
- Family Groups – facilitated by our Family Group Facilitator for particularly vulnerable and isolated families.
- Embedded volunteering and workforce development opportunities across our organisation.
- Children's Centre services, including a wide range of effective and creative services:
 - ✦ Employability & Training ○ Health & Social Care ○ Childcare ○ Food & Nutrition
 - ✦ Health & Well-being
 - ✦ Quality Play & Early Education Opportunities
 - ✦ Family Support
 - ✦ Quality Childcare

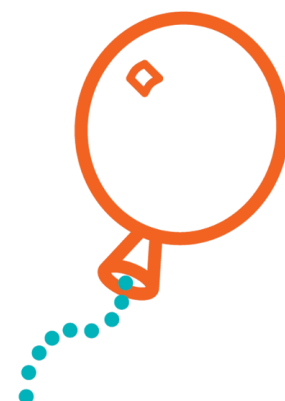
Our Mission Statement

Home-Start Greenwich exists to see a society in which every parent has the support they need to give their children the best possible start in life.

As a community network of trained volunteers and expert support, we are dedicated to the provision of inclusive services that enable confident and positive parenting and fulfil each family's potential.

We are here for families when they need us most

because childhood doesn't wait



About The Role

Job title:	SEND Practitioner
Reporting to:	Nursery Manager
Location:	Brookhill Children's Centre (this role may, however, be required to work across all Home-Start Greenwich (HSG) sites at short notice to ensure appropriate Safeguarding cover)
Staffing:	Practitioner Team
Hours:	Permanent, Part Time (14 hours per week, 52 weeks)
Salary:	£13,300.56
Closing date:	27 February 2026

Job Purpose

To support children and young people with Special Educational Needs and Disabilities (SEND) ensuring they can access learning, develop independence and achieve their full potential in a safe, inclusive and nurturing environment across the Royal Borough of Greenwich.

Key Responsibilities

Child & Learner Support

- Provide tailored support to pupils with SEND, both one-to-one and in small groups
- Implement individual education plans (IEPs), support plans, and EHCP targets
- Support pupils' academic, social, emotional, and physical development
- Use adaptive strategies, resources, and assistive technologies to remove barriers to learning.

Teaching & Learning

- Work closely with teachers to adapt lesson content and delivery
- Support differentiated learning activities aligned with pupils' needs
- Monitor and record progress, providing feedback to teachers and SENDCo
- Encourage independence, confidence, and positive behaviour.

Behaviour & Wellbeing

- Support pupils with emotional regulation and behaviour management strategies
- Promote positive behaviour in line with the school's behaviour policy
- Support pupils during transitions and unstructured times (e.g. break, lunch).

Collaboration & Communication

- Work collaboratively with teachers, SENDCo, therapists, and external professionals
- Communicate effectively with parents/carers regarding progress and concerns
- Attend review meetings, training sessions, and SEND planning meetings.

Safeguarding & Inclusion

- Uphold safeguarding policies and promote pupil welfare at all times
- Maintain confidentiality and accurate records
- Promote inclusion, equality, and respect within the learning environment.

Experience and Skills

- NVQ Level 3 in Supporting Teaching and Learning, SEND training.
- Experience working with EHCPs and IEPs
- Knowledge and understanding of safeguarding issues and procedures.
- Experience in a school, nursery, or specialist setting.

Benefits of working for Home-Start Greenwich

28 Days Annual leave	Tech Scheme	Cycle Scheme	50% Childcare Discount at Plumstead Nursery
5% Employer Pension Contribution	Ongoing Training and Development	Employee Assistance Programme	High Street, Online Stores and Leisure Discount Cards

Inclusion Matters

Home-Start Greenwich is an equal opportunities employer and champion of Equality, Diversity & Inclusion. We recruit for the person most suited to the job and welcome applications from candidates of all backgrounds & sectors.

Candidates must be based in the UK, have fluent spoken and written English and the right to work in the UK. Special consideration given to local candidates based in Southeast London.

LET'S WORK TOGETHER

How to Apply

Thank you for your interest in this role. To apply for this role please complete an application form on our website which can be found here [Join Us - Home-Start Greenwich](#).

HSG is committed to safeguarding and promoting the welfare of children and vulnerable adults and expects all staff working with children and vulnerable adults to share this commitment.

Safe recruitment is an important part of safeguarding and protecting children and vulnerable adults and it is essential that the assessment and selection of candidates for positions working or having regular contact with children and vulnerable adults is robust. Checks at an appropriate level will be undertaken prior to taking up employed work or voluntary activity.

Certain posts in HSG are exempt from the Rehabilitation of Offenders Act 1974 (Rehabilitation of Offenders Order 1978 in Northern Ireland). Whether a post is exempt or not will be clearly set out on the application form. If a post is exempt from the Act the candidate will be required to declare whether they/they has any convictions, cautions and bind overs, including any that would normally be regarded as spent. If a declaration is positive, details must be provided.

Home-Start Greenwich is an equal opportunities employer and champion of Equality, Diversity & Inclusion. We recruit for the person most suited to the job and welcome applications from candidates of all backgrounds & sectors.

Candidates must have fluent spoken and written English and the right to work in the UK.

We look forward to receiving your application.

